

ZOE'S Magic Camera

WHERE TO GO


HOW TO GET STARTED

First of all you'll need an iPhone!

In the App Store search for "Zoe's Magic Camera" and install the free app.

Open the App.

Follow the in-app instructions to get to a location using the map.

Tap the pin on the map and press  and you'll find an image. This is the image you will need to match at the location to discover the magic.

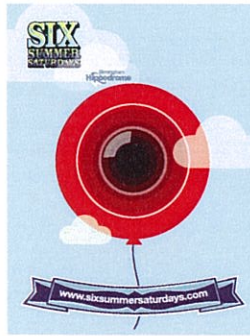
At the location, match the image and when you're happy, press "scan".

Wait for it to load and magic will happen!

If nothing appears check the image again. Are you too close or too far away?

Remember: It will only work if you mirror the image from the map with your phone!

If you're struggling, let us know on [facebook.com/ZoesMagicCamera](https://www.facebook.com/ZoesMagicCamera)



The Mailbox
Six Summer Saturdays Hub
(Front Entrance, level 3)



Chamberlain Square
(Joseph Priestley Statue)



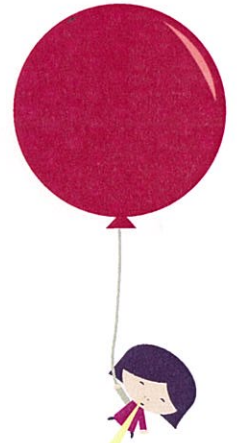
Birmingham Hippodrome
Piazza
(Positioned at with your back to The Arcadian Centre)



Selfridges
(Ground floor, Starbucks
entrance, accessible behind
Gourmet Burger Co. by
St. Martins Church)



Rotunda
(Facing the Rotunda, with
Upper East Mall behind you)

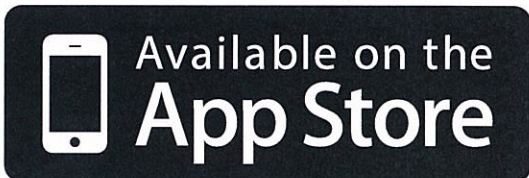


Cathedral Grounds
(On the corner of Colmore Row
and Temple Row)

Sssshhhhh... It's a secret...

I've heard that there are some secret performances happening in Brindleyplace. Why not locate this bench and see if you can find a secret performance?

There's more to be announced on [facebook.com/ZoesMagicCamera](https://www.facebook.com/ZoesMagicCamera)



The Mailbox

Birmingham
Hippodrome

Southside